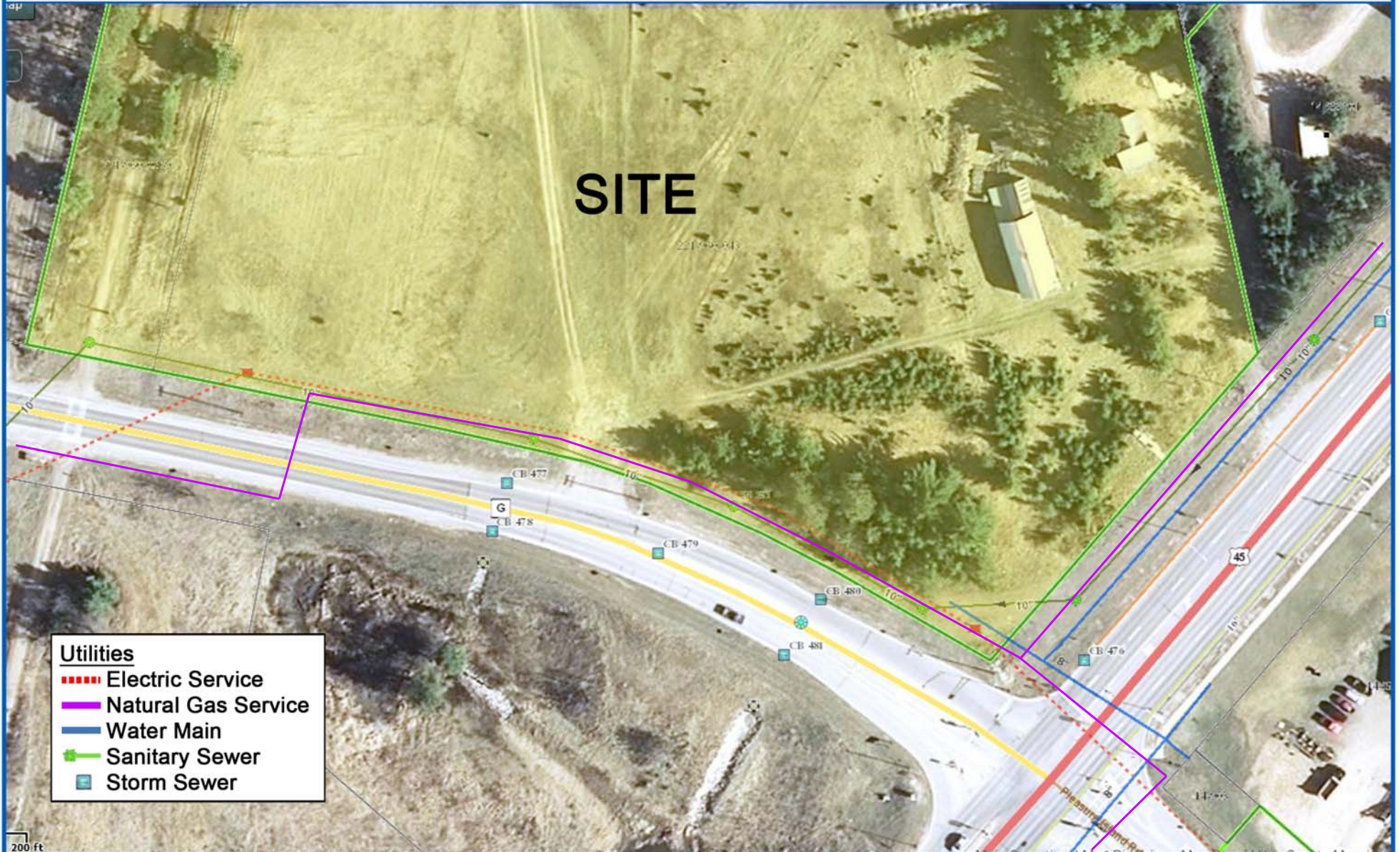


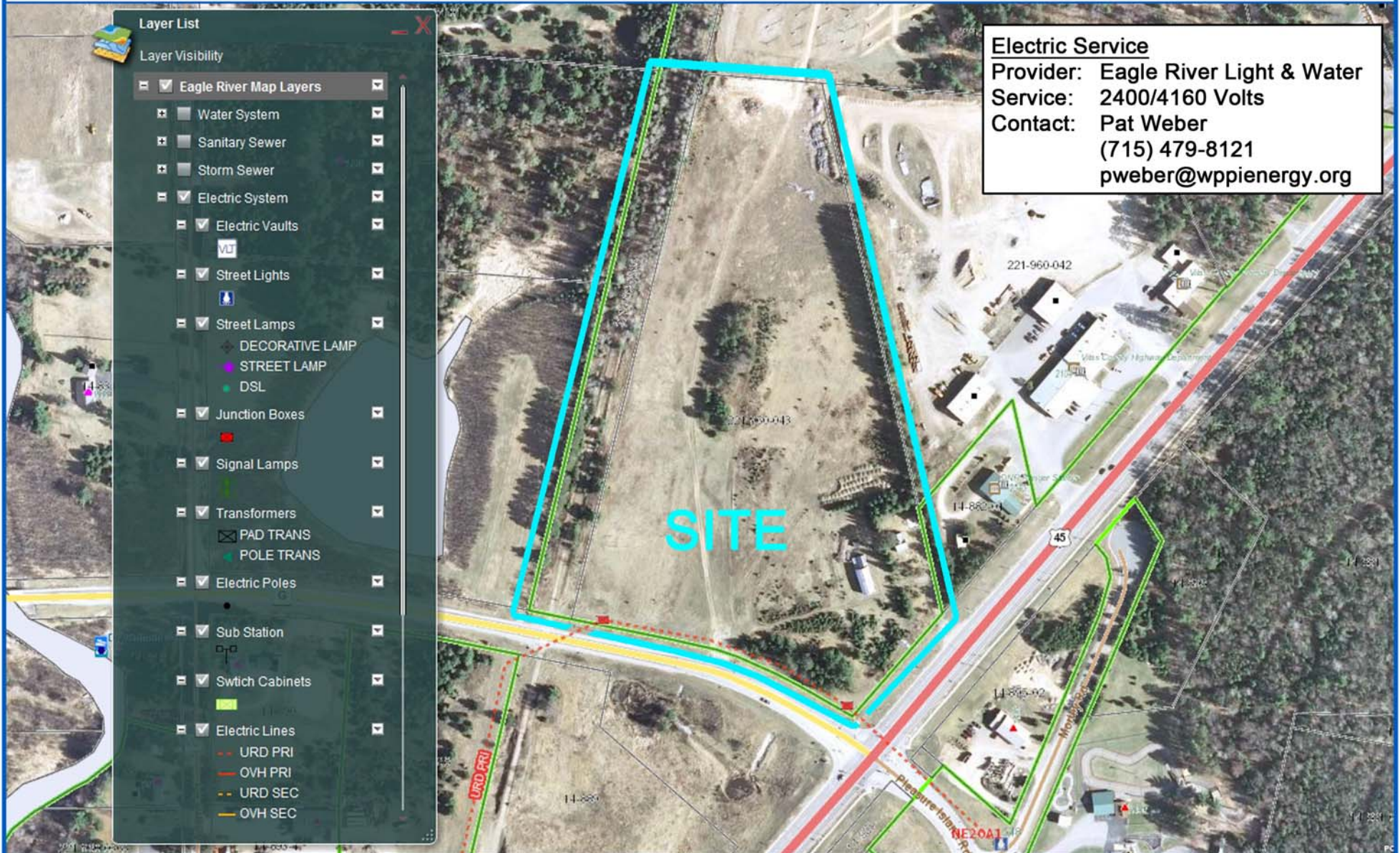
Highway 45 & Highway G - Eagle River, Wisconsin Combined Utility Map



Ruedebusch Development
4605 Dovetail Drive
Madison, WI 53704

Kyle Adams
(608) 243-9070
kylea@ruedebusch.com

Highway 45 & Highway G - Eagle River, Wisconsin Electric Service



Ruedebusch Development
4605 Dovetail Drive
Madison, WI 53704

Kyle Adams
(608) 243-9070
kylea@ruedebusch.com

Highway 45 & Highway G - Eagle River, Wisconsin Natural Gas Service

NOTICE AND DISCLAIMER

At your request, Wisconsin Public Service (WPS) is providing information regarding the location of certain of its underground facilities, including paper maps and/or electronic files (the "information").

WARNING: UNDERGROUND FACILITY LOCATIONS SHOWN IN THE PAPER MAPS AND/OR ELECTRONIC FILES ARE FOR REFERENCE PURPOSES ONLY AND THEREFORE, MUST BE FIELD VERIFIED. WPS's agreement to provide this information does not confirm or deny the location of any of WPS's underground facilities. Under the law and pursuant to Wisconsin State Statutes 86.047 and 182.0175, Federal Gas Safety Rule 192.014 and Michigan Act 53 of the Public Acts of 1974, you MUST confirm the locations of all underground facilities by requesting an underground locate through Diggers Hotline in Wisconsin by calling 811 or 800-242-8511 or MSS DIG in Michigan at 811 or 800-482-7171. Confirmation of the locations of underground facilities is YOUR responsibility.

DISCLAIMER: Anyone using the paper maps and/or electronic files assumes sole responsibility to verify in the field the locations of all underground facilities. To the fullest extent permitted by law, the user of the information agrees to indemnify, defend, and hold WPS harmless from any and all claims, damages, losses, and expenses, including costs and attorneys' fees, arising out of or resulting from the use of the information. Any user of the information also agrees that the use or duplication of the information constitutes agreement to the above terms and conditions.

Form 159-8200 Rev. 3-11



Natural Gas Service
 Provider: Wisconsin Public Service
 Service: Highway 45: 2" @ 15-60 PSI
 Highway G: 3" @ 15-60 PSI
 Contact: Carol Karls
 (920) 433-1135
 cskarls@wisconsinpublicservice.com

**Eagle River -
Highway 45 & County Road G**

0 125 250 500 Feet



WPS Gas Main

— 15-60 psi
 - - - 420-1000 psi

□ Vilas Parcels



Document Path: K:\ESRI\WPS_EagleRiverGas\US45CTH\IEGR Gas US45 CTHG.mxd



Ruedebusch Development
 4605 Dovetail Drive
 Madison, WI 53704

Kyle Adams
 (608) 243-9070
 kylea@ruedebusch.com

Highway 45 & Highway G - Eagle River, Wisconsin Water Service



Highway 45 & Highway G - Eagle River, Wisconsin

Sanitary Sewer Service



Ruedebusch Development
4605 Dovetail Drive
Madison, WI 53704

Kyle Adams
(608) 243-9070
kylea@ruedebusch.com

Highway 45 & Highway G - Eagle River, Wisconsin

Storm Sewer Service



Storm Sewer Service
Provider: City of Eagle River
Storm Inlets: Adjacent to Site (Hwy 45 & Hwy G)
Contact: Joe Laux
(715) 479-8682
administrator@ci.eagle-river.wi.us



Ruedebusch Development
4605 Dovetail Drive
Madison, WI 53704

Kyle Adams
(608) 243-9070
kylea@ruedebusch.com