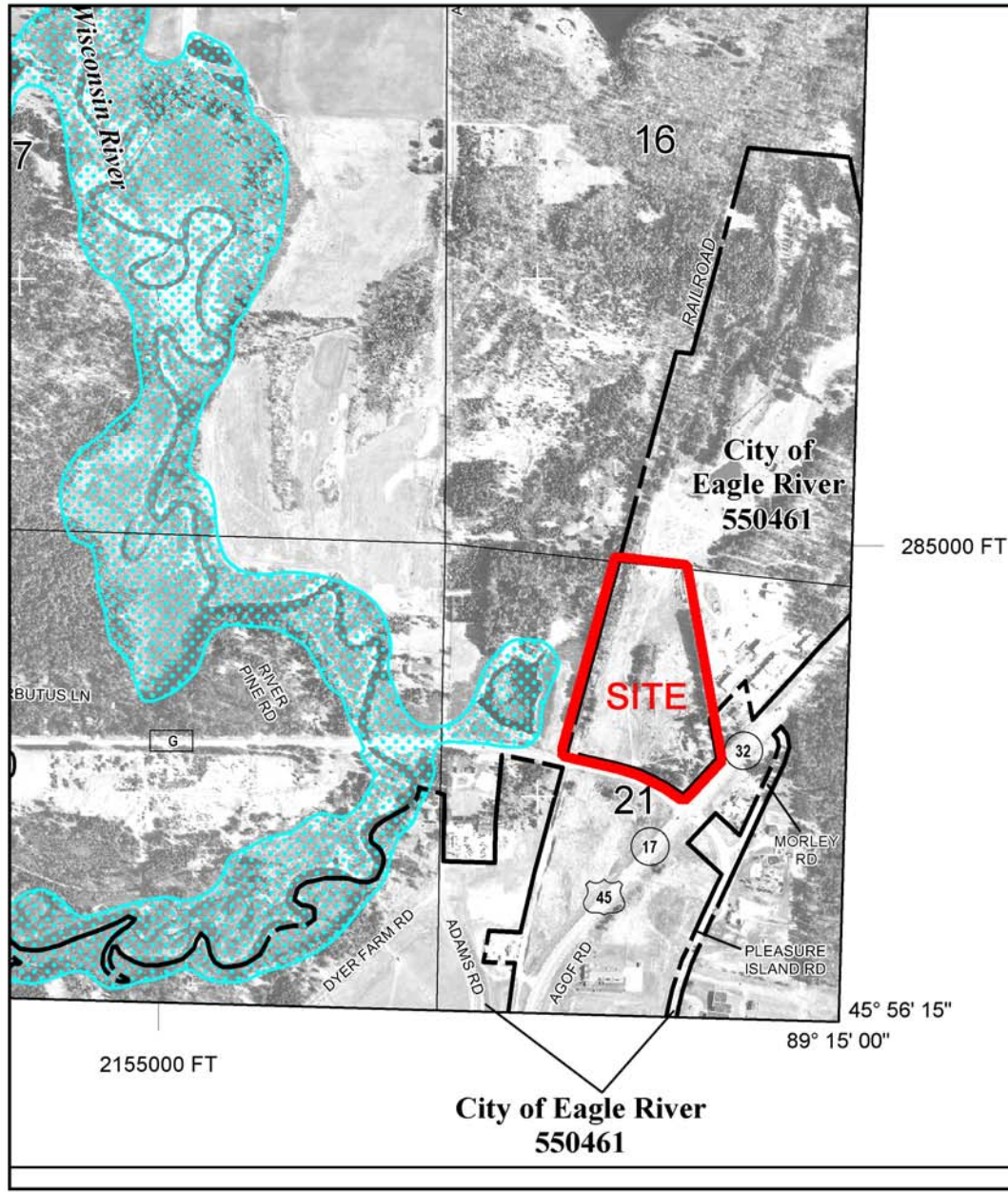



# Highway 45 & Highway G - Eagle River, Wisconsin FEMA - Flood Insurance Rate Map



  
**MAP SCALE 1" = 1000'**  
 500    0    1000    2000

---

**NFIP**  
**PANEL 0660B**

**FIRM**  
**FLOOD INSURANCE RATE MAP**  
**VILAS COUNTY,**  
**WISCONSIN**  
**AND INCORPORATED AREAS**


**PANEL 660 OF 800**  
 (SEE MAP INDEX FOR FIRM PANEL LAYOUT)

CONTAINS:

COMMUNITY	NUMBER	PANEL	SUFFIX
EAGLE RIVER, CITY OF	550461	0660	B
VILAS COUNTY	550605	0660	B

Notice to User: The **Map Number** shown below should be used when placing map orders; the **Community Number** shown above should be used on insurance applications for the subject community.

**MAP NUMBER**  
**55125C0660B**  
**EFFECTIVE DATE**  
**JUNE 5, 2012**

  
 Federal Emergency Management Agency

---

This is an official copy of a portion of the above referenced flood map. It was extracted using F-MIT On-Line. This map does not reflect changes or amendments which may have been made subsequent to the date on the title block. For the latest product information about National Flood Insurance Program flood maps check the FEMA Flood Map Store at [www.msc.fema.gov](http://www.msc.fema.gov)



**Ruedebusch Development**  
 4605 Dovetail Drive  
 Madison, WI 53704

**Kyle Adams**  
 (608) 243-9070  
[kylea@ruedebusch.com](mailto:kylea@ruedebusch.com)