

Legend

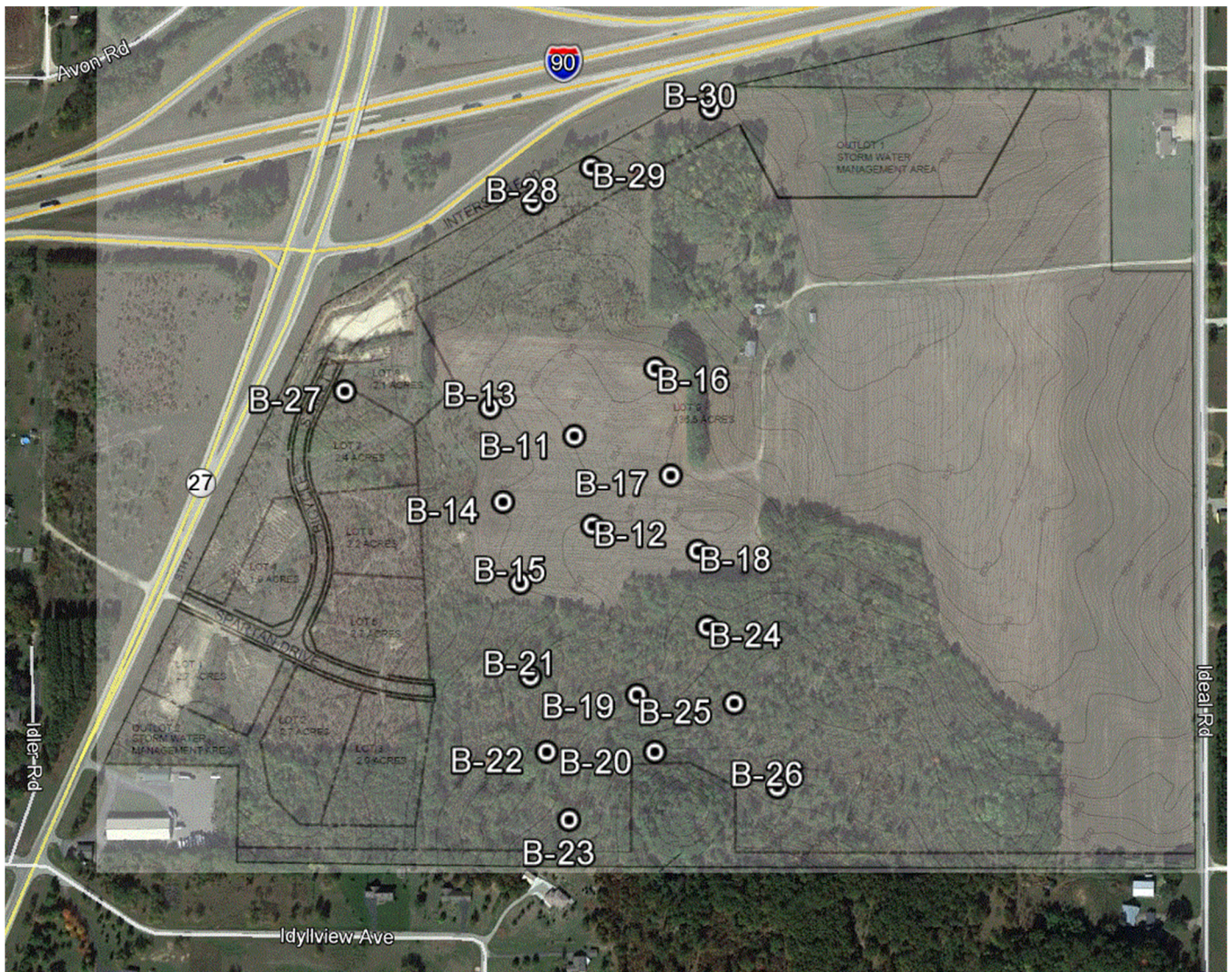
⊙ Boring Location

N



Boring Location Sketch

Proposed Industrial Development
SE of Int. S Black River Street and Interstate 90
Sparta, Wisconsin
12012.17.WIL



LOG OF BORING

CHOSEN VALLEY TESTING

CVT

PROJECT: 12012.17.WIL Design Phase Geotechnical Evaluation Proposed Industrial Park Ideal Rd Sparta, Wisconsin				BORING: B-11		
				LOCATION: See attached sketch		
				DATE: 8/31/2017		SCALE: 1" = 2'
Elev. 851.0	Depth 0.0	USCS Symbol	Description of Materials (ASTM D 2487/2488)	BPF	WL	Tests and Notes
850.2	0.8	SM	<u>Slightly Organic SILTY SAND</u> fine grained, dark brown, moist. (Topsoil)			Surface Elevations estimated to the nearest 1-foot contour using the Map of Existing provided by MSA Professional Services to the City of Sparta.
		SP	<u>POORLY GRADED SAND</u> fine grained, very light brown, moist, dense. (Alluvium)			
847.0	4.0			30		
		SP	<u>WEATHERED SANDSTONE</u> fine grained, very light brown to white, moist, very dense. (Weathered Bedrock) Trace gravel around 5'	*		* 31 + 50 = 9" Hard drilling below 5.5'
843.0	8.0			*		* 50 = 2" (set)
			End of boring Boring terminated due to auger refusal around 8' Boring sealed upon completion			

CVT STANDARD 12012.17.WIL (SPARTA INDUSTRIAL PARK).GPJ LOG A GNNN06.GDT 9/19/17

LOG OF BORING

CHOSEN VALLEY TESTING

CVT

PROJECT: 12012.17.WIL
Design Phase Geotechnical Evaluation
Proposed Industrial Park
Ideal Rd
Sparta, Wisconsin

BORING: **B-12**

LOCATION:
See attached sketch

DATE: 8/31/2017

SCALE: 1" = 2'

Elev. 851.0	Depth 0.0	USCS Symbol	Description of Materials (ASTM D 2487/2488)	BPF	WL	Tests and Notes
850.0	1.0	SM	<u>Slightly Organic SILTY SAND</u> fine grained, dark brown, moist. (Topsoil)			
		SP	<u>POORLY GRADED SAND</u> fine grained, very light brown, moist, loose. (Alluvium)			
847.0	4.0	SP	<u>WEATHERED SANDSTONE</u> fine grained, very light brown to white, moist, very dense. (Weathered Bedrock)			
			White below 6.5'			
841.0	10.0		End of boring Boring terminated due to auger refusal around 10' Boring sealed upon completion			

CVT STANDARD 12012.17.WIL (SPARTA INDUSTRIAL PARK).GPJ LOG A GNNN06.GDT 9/19/17

LOG OF BORING

CHOSEN VALLEY TESTING

CVT

PROJECT: 12012.17.WIL Design Phase Geotechnical Evaluation Proposed Industrial Park Ideal Rd Sparta, Wisconsin				BORING: B-13		
				LOCATION: See attached sketch		
				DATE: 8/31/2017	SCALE: 1" = 2'	
Elev. 844.0	Depth 0.0	USCS Symbol	Description of Materials (ASTM D 2487/2488)	BPF	WL	Tests and Notes
843.2	0.8	SM	<u>Slightly Organic SILTY SAND</u> fine grained, dark brown, moist.			
		SP	(Topsoil) <u>POORLY GRADED SAND</u> fine grained, light brown, moist, loose to medium dense. (Alluvium)			
				5		
				17		
837.5	6.5	SP	<u>WEATHERED SANDSTONE</u> fine grained, very light brown, moist, very dense. (Weathered Bedrock)	*		* 21 + 50 = 10" Grinding below 8'
			White below 9'	*		* 50 = 2" (set)
833.0	11.0		End of boring Boring terminated due to auger refusal around 11' Boring sealed upon completion			

CVT STANDARD 12012.17.WIL (SPARTA INDUSTRIAL PARK).GPJ LOG A GNNN06.GDT 9/19/17

LOG OF BORING

CHOSEN VALLEY TESTING

CVT

PROJECT: 12012.17.WIL Design Phase Geotechnical Evaluation Proposed Industrial Park Ideal Rd Sparta, Wisconsin				BORING: B-14		
				LOCATION: See attached sketch		
				DATE: 8/31/2017	SCALE: 1" = 2'	
Elev. 846.0	Depth 0.0	USCS Symbol	Description of Materials (ASTM D 2487/2488)	BPF	WL	Tests and Notes
845.2	0.8	SM	<u>Slightly Organic SILTY SAND</u> fine grained, dark brown, moist. (Topsoil)			
		SP	<u>POORLY GRADED SAND</u> fine grained, light brown, moist, medium dense. (Alluvium)			
				10		
			Trace gravel around 5'	13		
			Very light brown below 6.5'	29		
837.0	9.0	SP	<u>WEATHERED SANDSTONE</u> fine grained, white, moist, very dense. (Weathered Bedrock)	*		Grinding below 9'
835.0	11.0		End of boring Boring terminated due to auger refusal around 11' Boring sealed upon completion			* 28 + 50 = 8"

CVT STANDARD 12012.17.WIL (SPARTA INDUSTRIAL PARK).GPJ LOG A GNNN06.GDT 9/19/17

LOG OF BORING

CHOSEN VALLEY TESTING

CVT

PROJECT: 12012.17.WIL
Design Phase Geotechnical Evaluation
Proposed Industrial Park
Ideal Rd
Sparta, Wisconsin

BORING: **B-15**

LOCATION:
See attached sketch

DATE: 8/31/2017

SCALE: 1" = 2'

Elev. 846.0	Depth 0.0	USCS Symbol	Description of Materials (ASTM D 2487/2488)	BPF	WL	Tests and Notes
845.0	1.0	SM	<u>Slightly Organic SILTY SAND</u> fine grained, dark brown, moist. (Topsoil)			
		SP	<u>POORLY GRADED SAND</u> fine grained, very light brown, moist, loose to medium dense. (Alluvium)			
				5		
				15		
839.5	6.5	SP	<u>WEATHERED SANDSTONE</u> fine grained, white, moist, very dense. (Weathered Bedrock)	*		
						* 50 = 3" (set) Hard drilling below 7.5'
836.0	10.0		End of boring Boring terminated due to auger refusal around 10' Boring sealed upon completion			

CVT STANDARD 12012.17.WIL (SPARTA INDUSTRIAL PARK).GPJ LOG A GNN06.GDT 9/19/17

LOG OF BORING

CHOSEN VALLEY TESTING

CVT

PROJECT: 12012.17.WIL Design Phase Geotechnical Evaluation Proposed Industrial Park Ideal Rd Sparta, Wisconsin				BORING: B-16		
				LOCATION: See attached sketch		
				DATE: 8/31/2017		SCALE: 1" = 2'
Elev. 848.0	Depth 0.0	USCS Symbol	Description of Materials (ASTM D 2487/2488)	BPF	WL	Tests and Notes
847.2	0.8	SM	<u>Slightly Organic SILTY SAND</u> fine grained, dark brown, moist. (Topsoil)			Hard drilling below 4' * 18 + 50 = 10"
		SP	<u>POORLY GRADED SAND</u> fine grained, orangish brown, moist, medium dense. (Alluvium)			
843.0	5.0	SP	<u>WEATHERED SANDSTONE</u> fine grained, very light brown to white, moist, very dense. (Weathered Bedrock)			
840.9	7.1		End of boring Boring terminated due to auger refusal around 7' Boring sealed upon completion			* 50 = 1" (set)

CVT STANDARD 12012.17.WIL (SPARTA INDUSTRIAL PARK).GPJ LOG A GNNN06.GDT 9/19/17

LOG OF BORING

CHOSEN VALLEY TESTING

CVT

PROJECT: 12012.17.WIL
Design Phase Geotechnical Evaluation
Proposed Industrial Park
Ideal Rd
Sparta, Wisconsin

BORING: **B-17**

LOCATION:
See attached sketch

DATE: 8/31/2017

SCALE: 1" = 2'

Elev. 851.0	Depth 0.0	USCS Symbol	Description of Materials (ASTM D 2487/2488)	BPF	WL	Tests and Notes
850.2	0.8	SM	Slightly Organic SILTY SAND fine grained, dark brown, moist. (Topsoil)			
		SP SC	POORLY GRADED SAND with CLAY trace gravel, fine grained, brown, moist, loose. (Alluvium)			
				6		
				8		
844.5	6.5	SP	POORLY GRADED SAND fine grained, light brown, moist, medium dense to dense. (Alluvium)			
				17		
				17		
				38		
837.0	14.0	SP	WEATHERED SANDSTONE fine grained, white, moist, very dense. (Weathered Bedrock)			
836.3	14.7		End of boring Boring sealed upon completion	*		* 50 = 2" (set)

CVT STANDARD 12012.17.WIL (SPARTA INDUSTRIAL PARK).GPJ LOG A GNNN06.GDT 9/19/17

LOG OF BORING

CHOSEN VALLEY TESTING

CVT

PROJECT: 12012.17.WIL
Design Phase Geotechnical Evaluation
Proposed Industrial Park
Ideal Rd
Sparta, Wisconsin

BORING: **B-18**

LOCATION:
See attached sketch

DATE: 8/31/2017

SCALE: 1" = 2'

Elev. 854.0	Depth 0.0	USCS Symbol	Description of Materials (ASTM D 2487/2488)	BPF	WL	Tests and Notes
		SM	<u>Slightly Organic SILTY SAND</u> fine grained, dark brown, moist. (Topsoil)			
853.0	1.0	SP	<u>POORLY GRADED SAND</u> fine grained, white, moist, loose. (Residuum)			
				6		Hard drilling below 2.5'
				10		
847.5	6.5	SP	<u>WEATHERED SANDSTONE</u> fine grained, white, moist, very dense. (Weathered Bedrock)	*		* 28 + 50 = 8"
				*		* 50 = 3" (set)
844.0	10.0		End of boring Boring terminated due to auger refusal around 10' Boring sealed upon completion			

CVT STANDARD 12012.17.WIL (SPARTA INDUSTRIAL PARK).GPJ LOG A GNN06.GDT 9/19/17

CVT

PROJECT: 12012.17.WIL Design Phase Geotechnical Evaluation Proposed Industrial Park Ideal Rd Sparta, Wisconsin					BORING: B-19	
					LOCATION: See attached sketch	
					DATE: 8/30/2017	SCALE: 1" = 2'
Elev.	Depth	USCS Symbol	Description of Materials (ASTM D 2487/2488)	BPF	WL	Tests and Notes
857.0	0.0					
856.7	0.3	SM	<u>Slightly Organic SILTY SAND</u> fine grained, dark brown, moist. (Topsoil)			
		SM	<u>SILTY SAND</u> fine grained, dark brown, moist. (B-Horizon)			
855.0	2.0					
		SP	<u>POORLY GRADED SAND</u> fine grained, light brown, moist. (Alluvium)			
853.5	3.5					
		SP	<u>WEATHERED SANDSTONE</u> fine grained, very light brown to white, moist. (Weathered Bedrock)			
852.0	5.0					
			End of boring Boring terminated due to auger refusal around 5' Boring sealed upon completion			

LOG OF BORING

CHOSEN VALLEY TESTING

CVT

PROJECT: 12012.17.WIL Design Phase Geotechnical Evaluation Proposed Industrial Park Ideal Rd Sparta, Wisconsin					BORING: B-20	
					LOCATION: See attached sketch	
					DATE: 8/30/2017	SCALE: 1" = 2'

Elev.	Depth	USCS Symbol	Description of Materials (ASTM D 2487/2488)	BPF	WL	Tests and Notes
870.0	0.0					
869.7	0.3	SM	Slightly Organic SILTY SAND fine grained, dark brown, moist. (Topsoil)			
		SM	SILTY SAND fine grained, dark brown, moist. (B-Horizon)			
867.5	2.5					
867.0	3.0	SP	POORLY GRADED SAND fine grained, light brown, moist.			
866.5	3.5	SP	(Alluvium)			
			WEATHERED SANDSTONE fine grained, very light brown to white, moist. (Weathered Bedrock)			
			End of boring Boring terminated due to auger refusal around 3.5' Boring sealed upon completion			

CVT STANDARD 12012.17.WIL (SPARTA INDUSTRIAL PARK).GPJ LOG A GNN06.GDT 9/19/17

LOG OF BORING

CHOSEN VALLEY TESTING

CVT

PROJECT: 12012.17.WIL Design Phase Geotechnical Evaluation Proposed Industrial Park Ideal Rd Sparta, Wisconsin				BORING: B-21	
				LOCATION: See attached sketch	
				DATE: 8/30/2017	SCALE: 1" = 2'

Elev.	Depth	USCS Symbol	Description of Materials (ASTM D 2487/2488)	BPF	WL	Tests and Notes
849.0	0.0					
848.7	0.3	SM	Slightly Organic SILTY SAND fine grained, dark brown, moist. (Topsoil)			
		SM	SILTY SAND fine grained, dark brown, moist. (B-Horizon)			
847.0	2.0					
		SP	POORLY GRADED SAND fine grained, light brown, moist. (Alluvium)			
843.5	5.5					
		SP	WEATHERED SANDSTONE fine grained, very light brown to white, moist. (Weathered Bedrock)			
841.5	7.5					
			End of boring Boring terminated due to auger refusal around 7.5' Boring sealed upon completion			

CVT STANDARD 12012.17.WIL (SPARTA INDUSTRIAL PARK).GPJ LOG A GNNN06.GDT 9/19/17

LOG OF BORING

CHOSEN VALLEY TESTING

CVT

PROJECT: 12012.17.WIL
Design Phase Geotechnical Evaluation
Proposed Industrial Park
Ideal Rd
Sparta, Wisconsin

BORING: **B-22**

LOCATION:
See attached sketch

DATE: 8/30/2017

SCALE: 1" = 2'

Elev. 855.0	Depth 0.0	USCS Symbol	Description of Materials (ASTM D 2487/2488)	BPF	WL	Tests and Notes
854.9	0.1	SM	Slightly Organic SILTY SAND fine grained, dark brown, moist. (Topsoil)			
853.5	1.5	SM	SILTY SAND fine grained, dark brown, moist. (B-Horizon)			
		SP	POORLY GRADED SAND fine grained, light brown, moist. (Alluvium)			
846.0	9.0	SP	WEATHERED SANDSTONE fine grained, very light brown to white, moist. (Weathered Bedrock)			
845.3	9.7		End of boring Boring terminated due to auger refusal around 9'8" Boring sealed upon completion			

CVT STANDARD 12012.17.WIL (SPARTA INDUSTRIAL PARK).GPJ LOG A GNNN06.GDT 9/19/17

LOG OF BORING

CHOSEN VALLEY TESTING

CVT

PROJECT: 12012.17.WIL Design Phase Geotechnical Evaluation Proposed Industrial Park Ideal Rd Sparta, Wisconsin				BORING: B-23		
				LOCATION: See attached sketch		
				DATE: 8/30/2017	SCALE: 1" = 2'	
Elev. 864.0	Depth 0.0	USCS Symbol	Description of Materials (ASTM D 2487/2488)	BPF	WL	Tests and Notes
863.5	0.5	SM	Slightly Organic SILTY SAND fine grained, dark brown, moist. (Topsoil)			
		SM	SILTY SAND fine grained, dark brown, moist. (B-Horizon)			
861.0	3.0	SP	POORLY GRADED SAND fine grained, light brown, moist. (Alluvium)			
859.5	4.5	SP	WEATHERED SANDSTONE fine grained, very light brown to white, moist. (Weathered Bedrock)			
859.0	5.0	SP	End of boring Boring terminated due to auger refusal around 5' Boring sealed upon completion			

CVT STANDARD 12012.17.WIL (SPARTA INDUSTRIAL PARK).GPJ LOG A GNN06.GDT 9/19/17

LOG OF BORING

CHOSEN VALLEY TESTING

CVT

PROJECT: 12012.17.WIL Design Phase Geotechnical Evaluation Proposed Industrial Park Ideal Rd Sparta, Wisconsin				BORING: B-24		
				LOCATION: See attached sketch		
				DATE: 8/30/2017	SCALE: 1" = 2'	
Elev.	Depth	USCS Symbol	Description of Materials (ASTM D 2487/2488)	BPF	WL	Tests and Notes
857.0	0.0					
856.5	0.5	SM	Slightly Organic SILTY SAND fine grained, dark brown, moist. (Topsoil)			
		SM	SILTY SAND fine grained, dark brown, moist. (B-Horizon)			
855.0	2.0					
		SP	POORLY GRADED SAND fine grained, light brown, moist. (Alluvium)			
853.0	4.0					
		SP	WEATHERED SANDSTONE fine grained, very light brown to white, moist. (Weathered Bedrock)			
850.8	6.2					
			End of boring Boring terminated due to auger refusal around 6'2" Boring sealed upon completion			

CVT STANDARD 12012.17.WIL (SPARTA INDUSTRIAL PARK).GPJ LOG A GNNN06.GDT 9/19/17

CVT

CVT STANDARD 12012.17.WIL (SPARTA INDUSTRIAL PARK).GPJ LOG A GNNN06.GDT 9/19/17

LOG OF BORING

CHOSEN VALLEY TESTING

CVT

PROJECT: 12012.17.WIL Design Phase Geotechnical Evaluation Proposed Industrial Park Ideal Rd Sparta, Wisconsin				BORING: B-26	
				LOCATION: See attached sketch	
				DATE: 8/30/2017	SCALE: 1" = 2'

Elev.	Depth	USCS Symbol	Description of Materials (ASTM D 2487/2488)	BPF	WL	Tests and Notes
873.0	0.0					
872.5	0.5	SM	Slightly Organic SILTY SAND fine grained, dark brown, moist.			
		SM	(Topsoil)			
871.5	1.5		SILTY SAND fine grained, dark brown, moist.			
			(B-Horizon)			
		SP	POORLY GRADED SAND fine grained, light brown, moist.			
			(Alluvium)			
866.7	6.3					
866.5	6.5	SP	WEATHERED SANDSTONE fine grained, very light brown to white, moist.			
			(Weathered Bedrock)			
			End of boring Boring terminated due to auger refusal around 6'6" Boring sealed upon completion			

CVT STANDARD 12012.17.WIL (SPARTA INDUSTRIAL PARK).GPJ LOG A GNNN06.GDT 9/19/17

LOG OF BORING

CHOSEN VALLEY TESTING

CVT

PROJECT: 12012.17.WIL Design Phase Geotechnical Evaluation Proposed Industrial Park Ideal Rd Sparta, Wisconsin				BORING: B-27		
				LOCATION: See attached sketch		
				DATE: 8/31/2017	SCALE: 1" = 2'	
Elev. 831.0	Depth 0.0	USCS Symbol	Description of Materials (ASTM D 2487/2488)	BPF	WL	Tests and Notes
- 830.3	0.7	SM	<u>Slightly Organic SILTY SAND</u> fine grained, dark brown, moist.			
		SP	(Topsoil) <u>POORLY GRADED SAND</u> fine grained, light brown, moist, medium dense to dense. (Alluvium)			
			Very light brown below 4'	13		
				18		
				38		
822.0	9.0	SP	<u>WEATHERED SANDSTONE</u> fine grained, white, moist, very dense. (Weathered Bedrock)	*		* 50 = 5" (set)
				*		Grinding below 11'
				*		* 50 = 2" (set)
816.3	14.7		End of boring Boring sealed upon completion	*		* 50 = 2" (set)

CVT STANDARD 12012.17.WIL (SPARTA INDUSTRIAL PARK).GPJ LOG A GNNN06.GDT 9/19/17

LOG OF BORING

CHOSEN VALLEY TESTING

CVT

PROJECT: 12012.17.WIL Design Phase Geotechnical Evaluation Proposed Industrial Park Ideal Rd Sparta, Wisconsin	BORING: B-28	
	LOCATION: See attached sketch	
	DATE: 8/31/2017	SCALE: 1" = 2'

Elev. 834.0	Depth 0.0	USCS Symbol	Description of Materials (ASTM D 2487/2488)	BPF	WL	Tests and Notes
833.5	0.5	SM	Slightly Organic SILTY SAND fine grained, dark brown, moist. (Topsoil)			
		SP	POORLY GRADED SAND fine grained, light brown, moist, loose to medium dense. (Alluvium)			
				7		
				16		
827.5	6.5	SP	WEATHERED SANDSTONE fine grained, very light brown to white, moist, very dense. (Alluvium)	*		Hard drilling below 7' * 50 = 5" (set)
824.6	9.4			*		* 50 = 5" (set)
			End of boring Boring terminated due to auger refusal around 9' Boring sealed upon completion			

CVT STANDARD 12012.17.WIL (SPARTA INDUSTRIAL PARK).GPJ LOG A GNN06.GDT 9/19/17

LOG OF BORING

CHOSEN VALLEY TESTING

CVT

PROJECT: 12012.17.WIL
Design Phase Geotechnical Evaluation
Proposed Industrial Park
Ideal Rd
Sparta, Wisconsin

BORING: **B-29**

LOCATION:
See attached sketch

DATE: 8/31/2017

SCALE: 1" = 2'

Elev. 832.0	Depth 0.0	USCS Symbol	Description of Materials (ASTM D 2487/2488)	BPF	WL	Tests and Notes
		SM	<u>Slightly Organic SILTY SAND</u> fine grained, dark brown, moist. (Topsoil)			
831.0	1.0	SP	<u>POORLY GRADED SAND</u> fine grained, light orangish brown, moist, loose to medium dense. (Residium)			
				9		
			White below 5'	13		
825.5	6.5	SP	<u>WEATHERED SANDSTONE</u> fine grained, white, moist, very dense. (Weathered Bedrock)	*		* 17 + 50 = 12"
			Trace gravel around 10'	*		* 26 + 50 = 10"
821.0	11.0		End of boring Boring terminated due to auger refusal around 11' Boring sealed upon completion			

CVT STANDARD 12012.17.WIL (SPARTA INDUSTRIAL PARK).GPJ LOG A GNN06.GDT 9/19/17

LOG OF BORING

CHOSEN VALLEY TESTING

CVT

PROJECT: 12012.17.WIL Design Phase Geotechnical Evaluation Proposed Industrial Park Ideal Rd Sparta, Wisconsin				BORING: B-30		
				LOCATION: See attached sketch		
				DATE: 8/31/2017	SCALE: 1" = 2'	
Elev. 822.0	Depth 0.0	USCS Symbol	Description of Materials (ASTM D 2487/2488)	BPF	WL	Tests and Notes
821.0	1.0	SM	<u>Slightly Organic SILTY SAND</u> fine grained, dark brown, moist. (Topsoil)			
		SP	<u>POORLY GRADED SAND</u> fine grained, light brown, moist, medium dense. (Residium)			
			Light orangish brown below 4'	14		Hard drilling below 2.5'
				13		
815.5	6.5	SP	<u>WEATHERED SANDSTONE</u> fine grained, light brown, moist, very dense. (Weathered Bedrock)	*		* 20 + 50 = 8"
			White below 9'	*		* 50 = 4" (set)
811.0	11.0		End of boring Boring terminated due to auger refusal around 11' Boring sealed upon completion			

CVT STANDARD 12012.17.WIL (SPARTA INDUSTRIAL PARK).GPJ LOG A GNN06.GDT 9/19/17